



Office of the Governor – Guam Medical Referral Office

P.O. Box 2950 Hagåtña, Guam 96932

Telephone: (671) 475-9350/353/428

Facsimile: (671) 472-7557

FELIX PEREZ CAMACHO
THE HONORABLE GOVERNOR OF GUAM

MICHEAL W. CRUZ M.D.
THE HONORABLE LIEUTENANT GOVERNOR

March 31, 2009

To: Governor of Guam
Lt. Governor of Guam
Speaker's Office
Office of the Public Auditor-electronic version through email ycabrera@guamopa.org
Senator Frank B. Aguon, Jr.

From: Director, Guam Medical Referral Office

Subject: Monthly Report

Attached is the March 2009 monthly report of activities as required to be submitted at the end of the month.

This report is only for the Philippines, Honolulu, and Los Angeles, California. Any reference to the Guam office is incorporated in the Governor's Office report. Please note that this report includes those already scheduled to depart.

Please note that the outsourcing contract of the Philippines, Honolulu and Los Angeles offices, have officially been signed by the Governor on June 24, 2008. Full implementation of outsourcing took effect on July 1, 2008.

Please feel free to contact me should you need any further assistance on this matter by calling our office at 475-9353/9350.


Peter Alexis Ada

Cc: Chief(s) of Staff: J. George Bamba and Carlotta Leon Guerrero
BBMR
BIT
GMRO Copy

Enclosure

0381

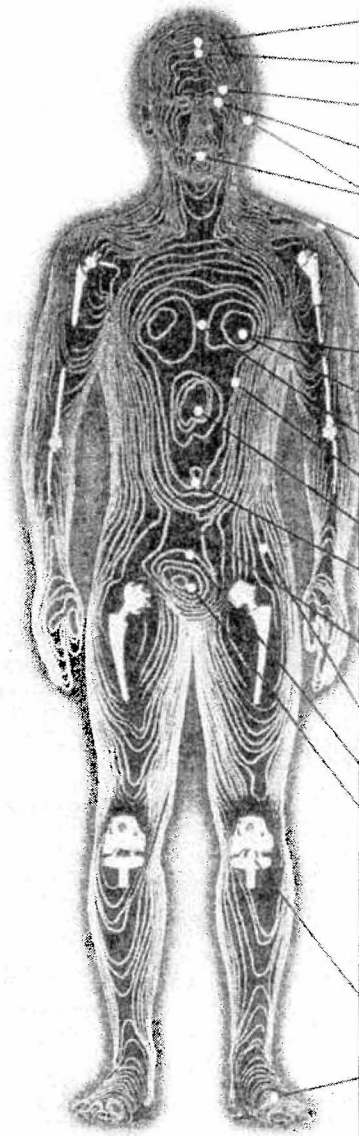
1492
2009 MAR 31 AM 10:20 mc
Office of the Speaker
Judith T. Won Pat, Ed. D.
Date 3/31/09
Time
Received by [Signature]

30-09-0374
Office of the Speaker
Judith T. Won Pat, Ed. D.
Date 3/31/09
Time
Received by [Signature]

GUAM MEDICAL REFERRAL
OFFICE
MONTHLY REPORT

MARCH 2009

CAUSES FOR REFERRAL



	Philippines	Hawaii	LosAngeles
Mental Health/Psychiatry			
Neurology	2	2	
Ophthalmology			
Optometrist	1		1
Otorhinolaryngology			
Orthodontist	2		1
Dermatology	3	1	1
Cardiovascular	4	1	1
Surgery - Cardiovascular	2	1	
Surgery - Vascular	3		1
Pulmonary Disease	2	1	
Surgery - Neurology	2		1
Gastroenterology (Abdominal)	3	2	1
Spinal Column	2	1	
CANCER	10	5	4
Nephrology			
Obstetrics & Gynecology	5	2	
Urology	2	1	
HIP (dysplasia, surgery)	1	2	1
DIABETIC	2	2	
Surgery - Orthopedics	3	2	1
Podiatry	2	3	
Complete Physical Examination:			
Second Opinion:	18		
	5	1	2
OTHER	1	2	3
TOTAL :	75	29	18
		Grand Total	122
		for the month:	

March 2009

GUAM MEDICAL REFERRAL OFFICE MONTHLY REPORT

Facility	No. Processed	MIP/Medicaid	StayWell	TakeCare	Select Care	NetCare	Medicare	Workmens Comp.	VA	Military	Self Pay	Other
PHILIPPINE OUT BOUND												
Asian Hospital	1			1								
St. Luke's	73	10	14	34	9		1			5		
Medical City												
Other	1				1							
TOTAL PATIENT FOR PHILIPPINES	75	10	14	35	10		1			5		
TOTAL ESCORT FOR PHILIPPINES	105											
HAWAII OUT BOUND												
Kapiolani	4			4								
Pali Momi												
Queen's	1			1								
Shriners	1										1	
Straub Clinic	7		3			3	1					
Tripler	14	1						9			4	
Other	2										2	
TOTAL PATIENT FOR HAWAII	29	1	3	5		3	1	9			7	
TOTAL ESCORT FOR HAWAII	31											
LOS ANGELES OUT BOUND												
Anaheim	7	2	2		2	1						
Cedar Sinai	1		1									
Children's Hospital: Millers & LA	2	2										
Good Samaritan	6		1	4	1							
Loma Linda												
Long Beach												
St. Johns												
St. Vincent												
UCLA	1		1									
White Memorial												
Other	1					1						
TOTAL PATIENT FOR LOS ANGELES	18	2	2	5	4	3	2					
TOTAL ESCORT FOR LOS ANGELES	21											
TOTAL PATIENT FOR MONTH	122											
TOTAL ESCORT FOR MONTH	157											
TOTAL EXPIRED FOR MONTH *	2											
ACCUMULATIVE TO DATE	3251											

**Government of Guam
Report for the month of March 2009
Budget Digest**

GUAM

A5400 Account code	Appropriation Classification	FY 2009 Expenditures & Encumbrances
	PERSONNEL SERVICES	
111	Regular Salaries/Increments	0
112	Overtime/Special Pay	0
113	Benefits	0
	OPERATIONS	
230	Contractual services:	0
233	Office space rental:	0
240	Supplies & materials:	0
250	Equipment:	0
270	Workers compensation	0
271	Drug testing	0
280	Sub-recipient/sub grant	0
290	Miscellaneous	0
	UTILITIES	
361	Power	0
362	Water/sewer	0
363	Telephone/toll	0
450	CAPITAL OUTLAY	0

Note: The Guam office operation and budget are under the Governor's office budget submission

Government of Guam
Report for the month of March 2009
Budget Digest

PHILIPPINES

A5400 Account code	Appropriation Classification	FY 2009 Expenditures & Encumbrances
	PERSONNEL SERVICES	
111	Regular Salaries/Increments	NIL
112	Overtime/Special Pay	NIL
113	Benefits	NIL
	OPERATIONS	
230	Contractual services:	\$42,556.80
233	Office space rental:	NIL
240	Supplies & materials:	NIL
250	Equipment:	NIL
270	Workers compensation	NIL
271	Drug testing	NIL
280	Sub-recipient/sub grant	NIL
290	Miscellaneous	NIL
	UTILITIES	
361	Power	NIL
362	Water/sewer	NIL
363	Telephone/toll	NIL
450	CAPITAL OUTLAY	NIL
	TOTAL APPROPRIATIONS	\$42,556.80

Notation

Amount expended for March only	\$14,185.60
Number of Patients sent to Philippines for March	75
Amount spent per patient in Philippines for March	\$189.14
Number of Escorts sent to Philippines for March	105
Number of patients sent to Philippines for Cumulative 2008	411

**Government of Guam
Report for the month of March 2009
Budget Digest**

LOS ANGELES

A5400 Account code	Appropriation Classification	FY 2009 Expenditures & Encumbrances
	PERSONNEL SERVICES	
111	Regular Salaries/Increments	NIL
112	Overtime/Special Pay	NIL
113	Benefits	NIL
	OPERATIONS	
230	Contractual services:	\$48,707.89
233	Office space rental:	NIL
240	Supplies & materials:	NIL
250	Equipment:	NIL
270	Workers compensation	NIL
271	Drug testing	NIL
280	Sub-recipient/sub grant	NIL
290	Miscellaneous	NIL
	UTILITIES	
361	Power	NIL
362	Water/sewer	NIL
363	Telephone/toll	NIL
450	CAPITAL OUTLAY	NIL
	TOTAL APPROPRIATIONS	\$48,707.89

Notation

Amount expended for March only	\$16,235.96
Number of Patients sent to Los Angeles for March	18
Amount spent per patient in Los Angeles for March	\$ 901.98
Number of Escorts sent to Los Angeles for March	21

Number of patients sent to Los Angeles for Cumulative 2009	94
---	----

**Government of Guam
Report for the month of March 2009
Budget Digest**

HONOLULU

A5400 Account code	Appropriation Classification	FY 2009 Expenditures & Encumbrances
	PERSONNEL SERVICES	
111	Regular Salaries/Increments	NIL
112	Overtime/Special Pay	NIL
113	Benefits	NIL
	OPERATIONS	
230	Contractual services:	\$56,170.40
233	Office space rental:	NIL
240	Supplies & materials:	NIL
250	Equipment:	NIL
270	Workers compensation	NIL
271	Drug testing	NIL
280	Sub-recipient/sub grant	NIL
290	Miscellaneous	NIL
	UTILITIES	
361	Power	NIL
362	Water/sewer	NIL
363	Telephone/toll	NIL
450	CAPITAL OUTLAY	NIL
	TOTAL APPROPRIATIONS	\$56,170.40

Notation

Amount expended for March only	\$18,723.46
Number of Patients sent to Hawaii for March	29
Amount spent per patient in Hawaii for March	\$ 645.63
Number of Escorts sent to Hawaii for March	31
Number of patients sent to Hawaii for Cumulative 2009	133

ESTIMATED COST PER PATIENT

Site	1stQuarter Expenditure	Number of Patients Served	Total Cost per patient for the quarter
Honolulu	\$18,723.46	29	\$645.63
Los Angeles	\$16,235.74	18	\$901.98
Philippines (Outsourced)	\$14,185.60	75	\$189.14

Note: *This figure is estimated because BBMR has not yet closed its books for the quarter.*